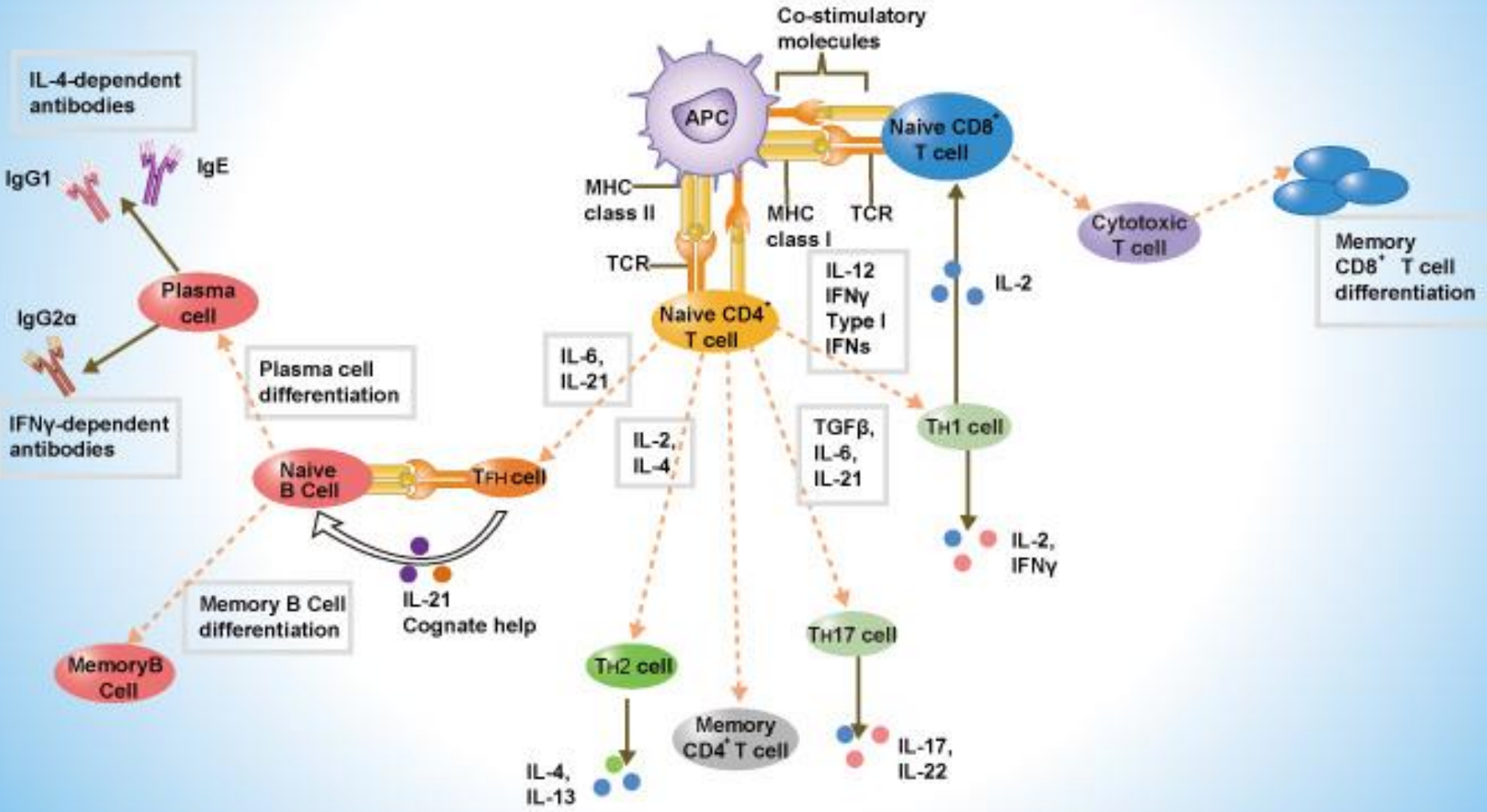
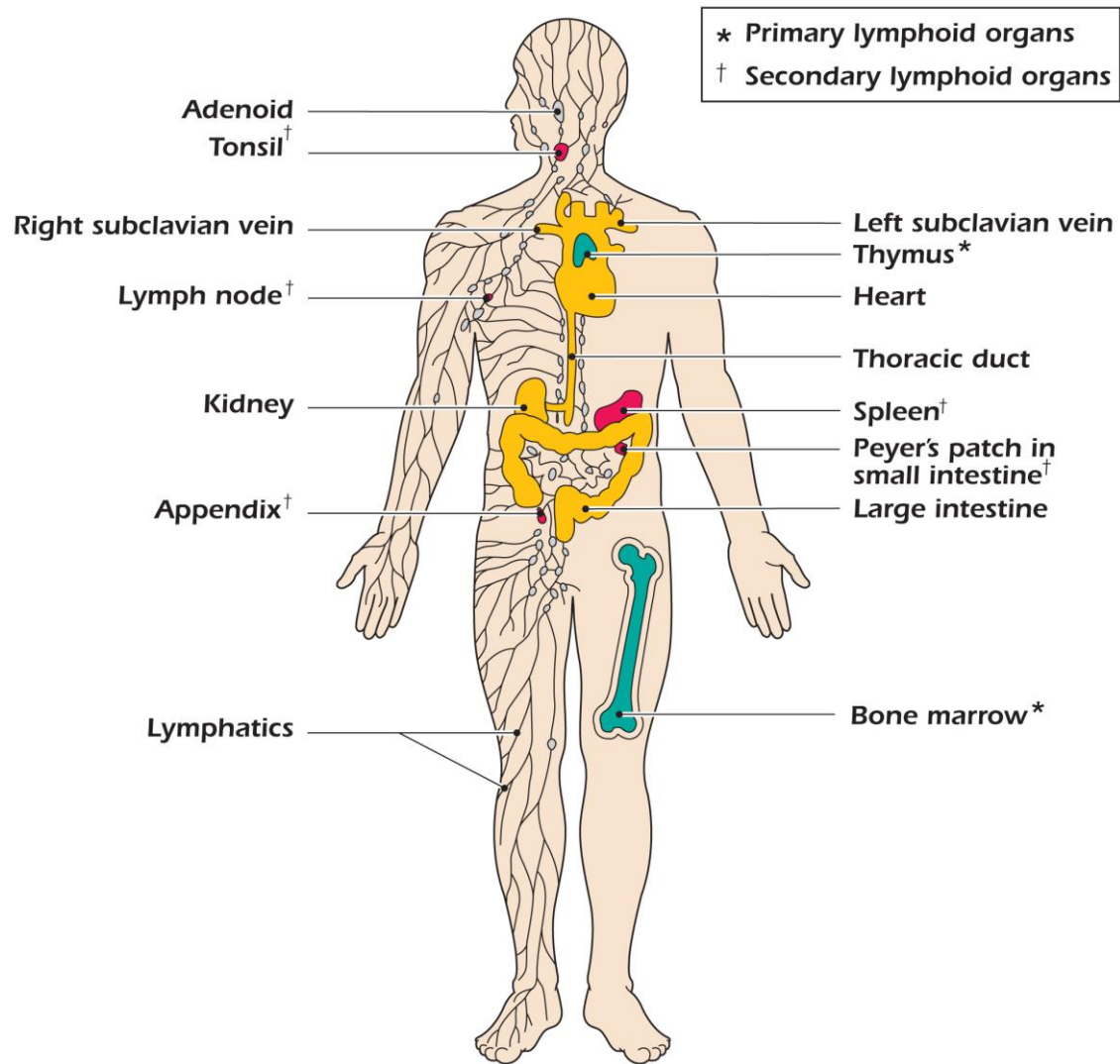
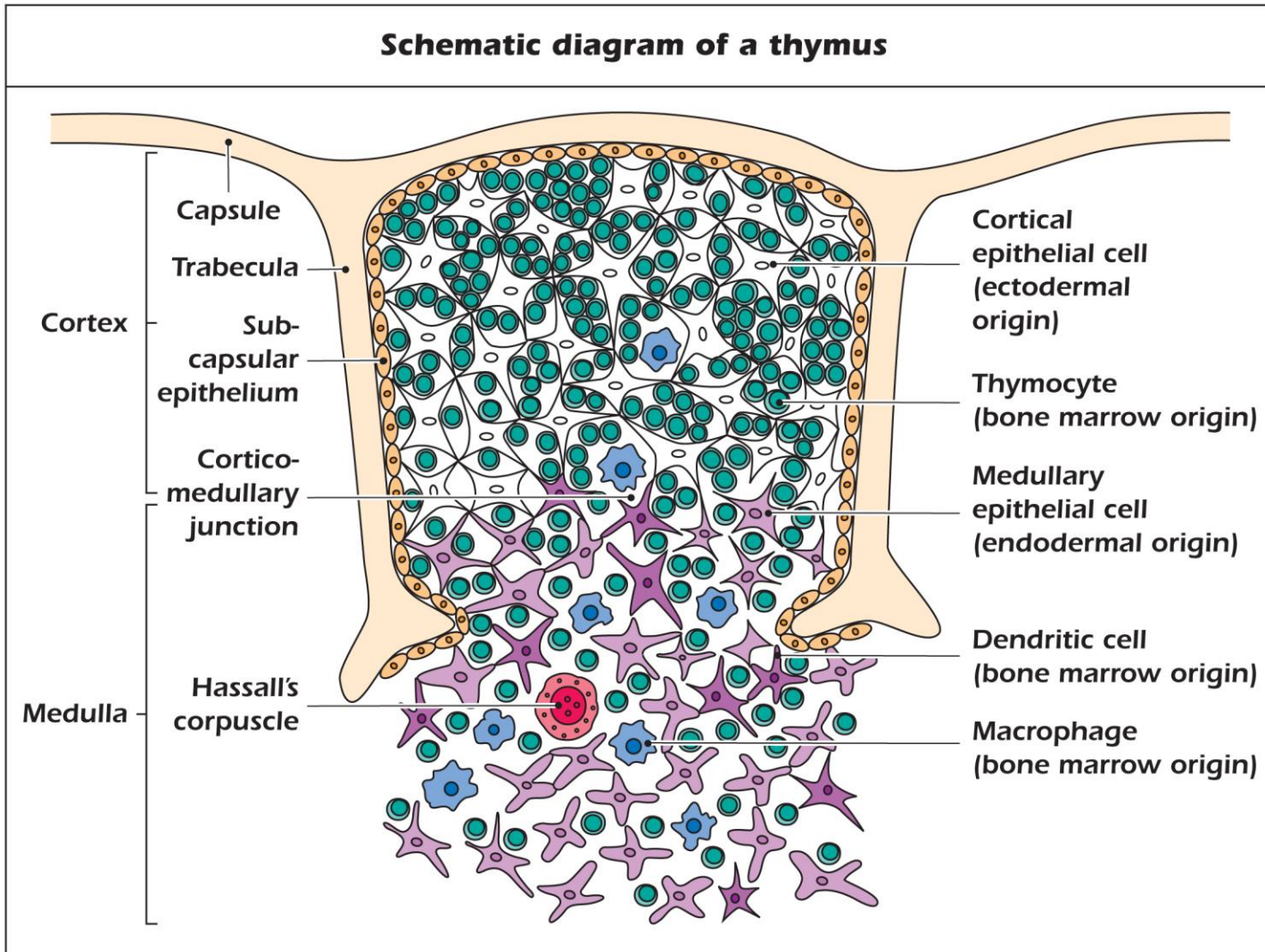


Adaptive Immunity

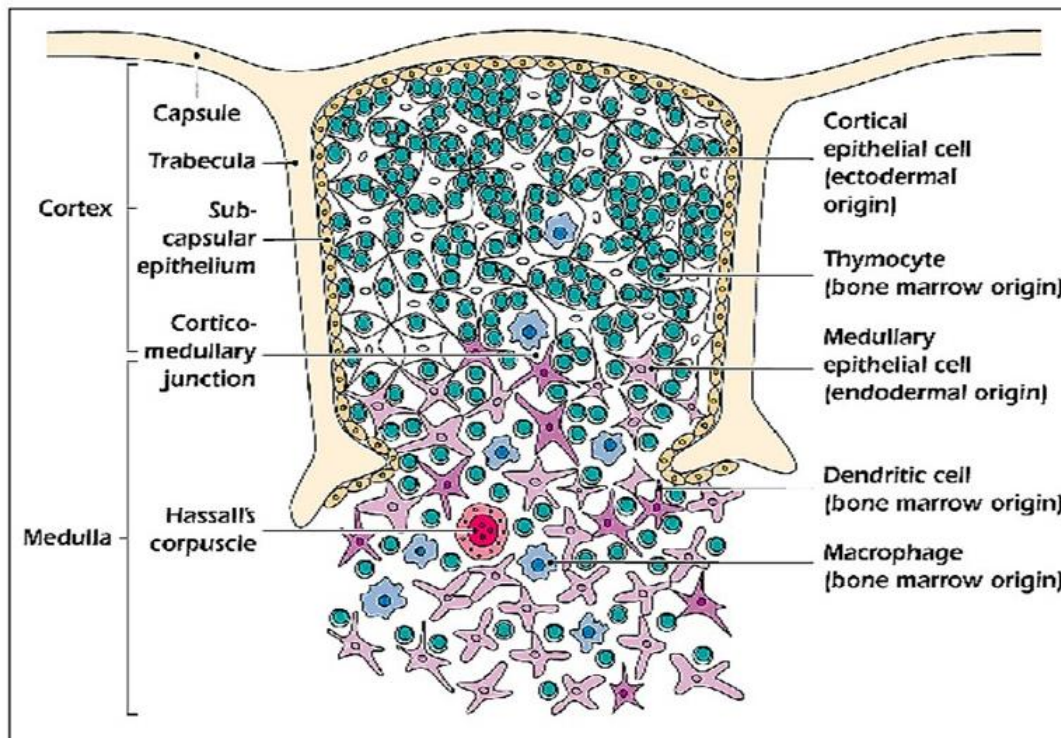




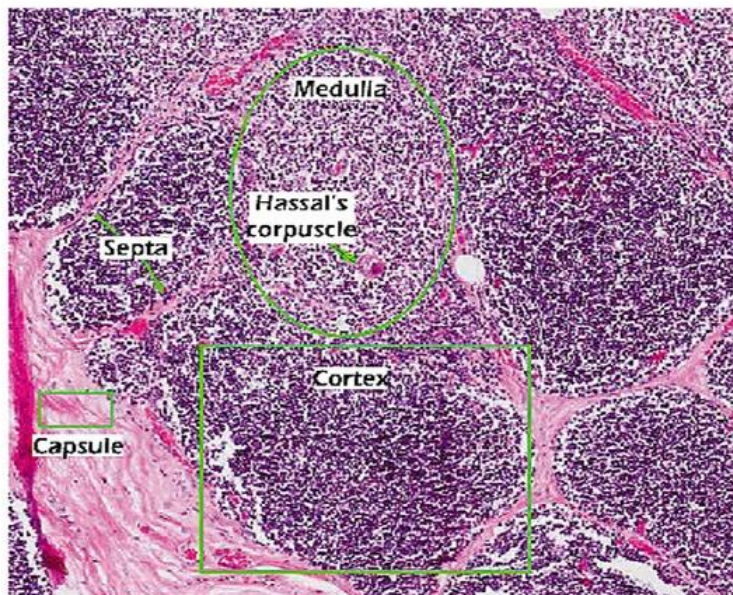
Distribution of lymphoid tissues in the body.

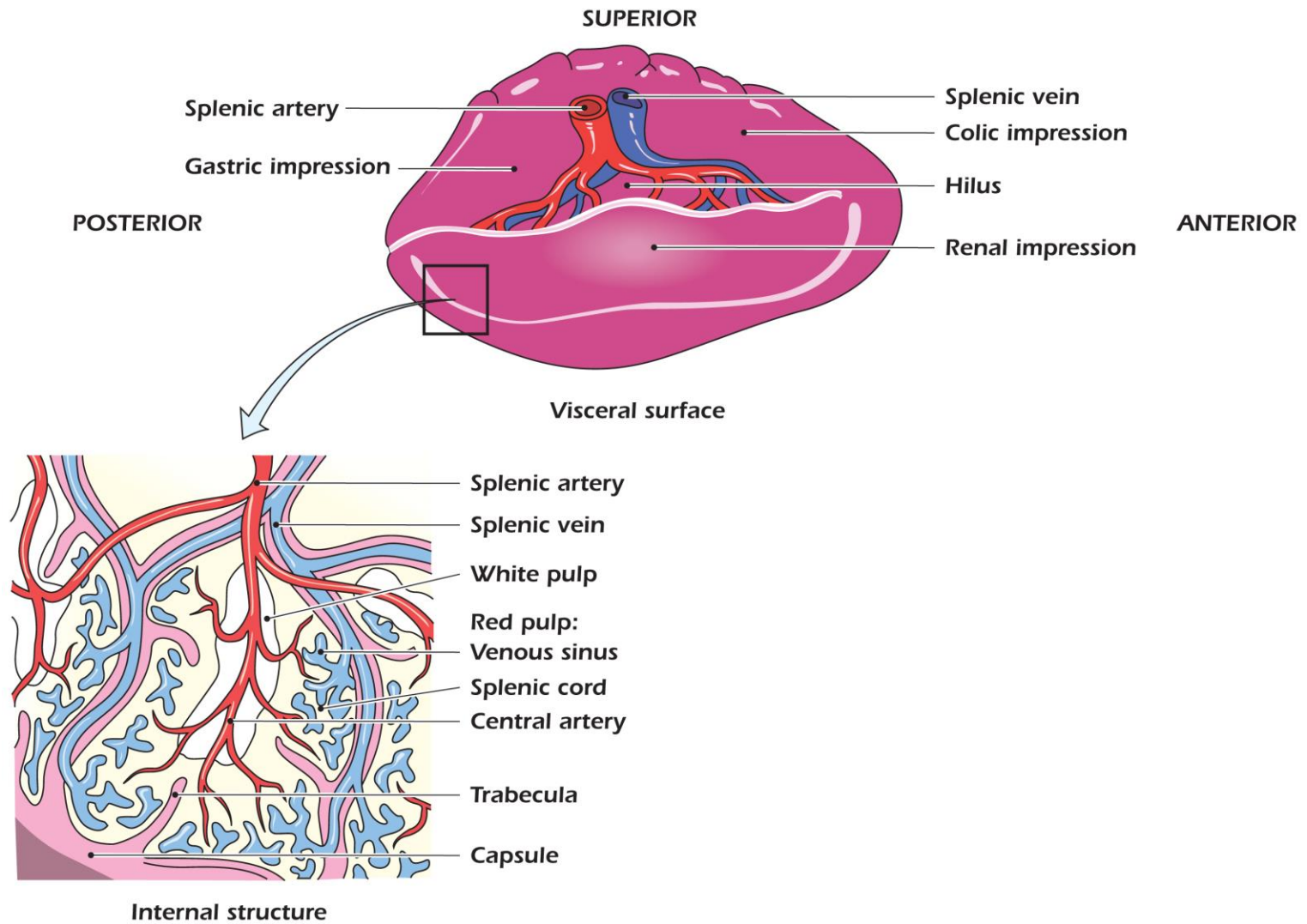


Cellular organization of the thymus.

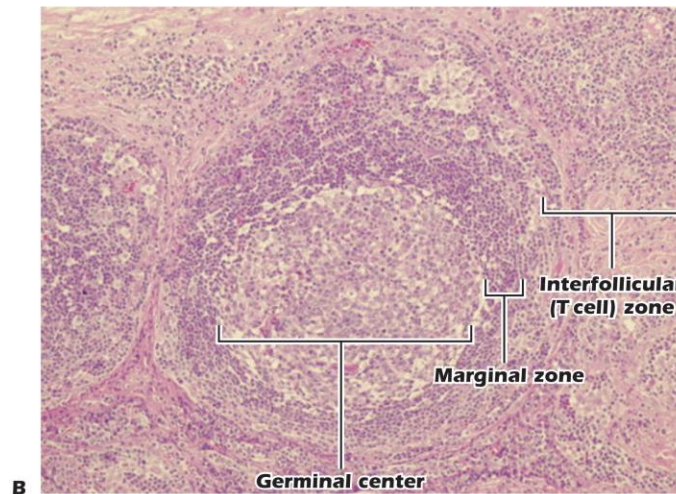
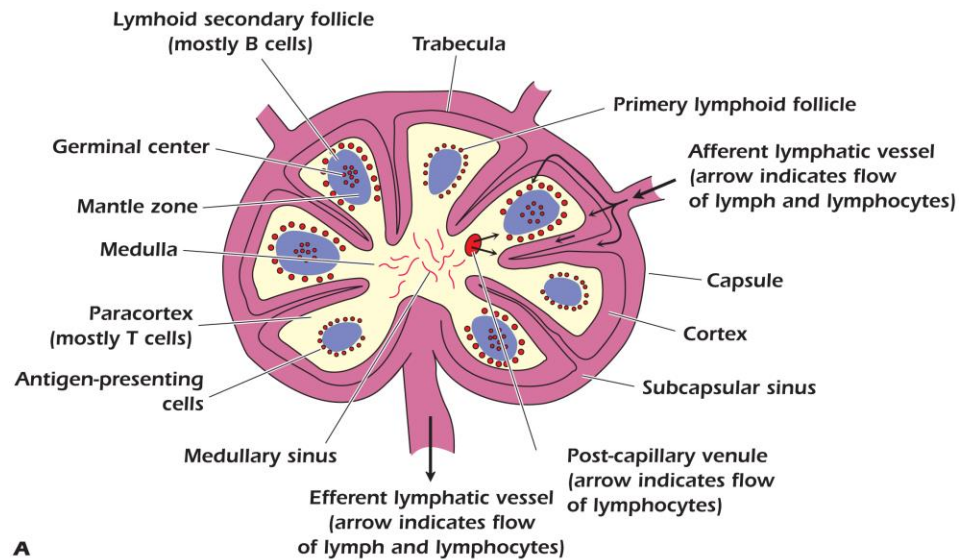


B

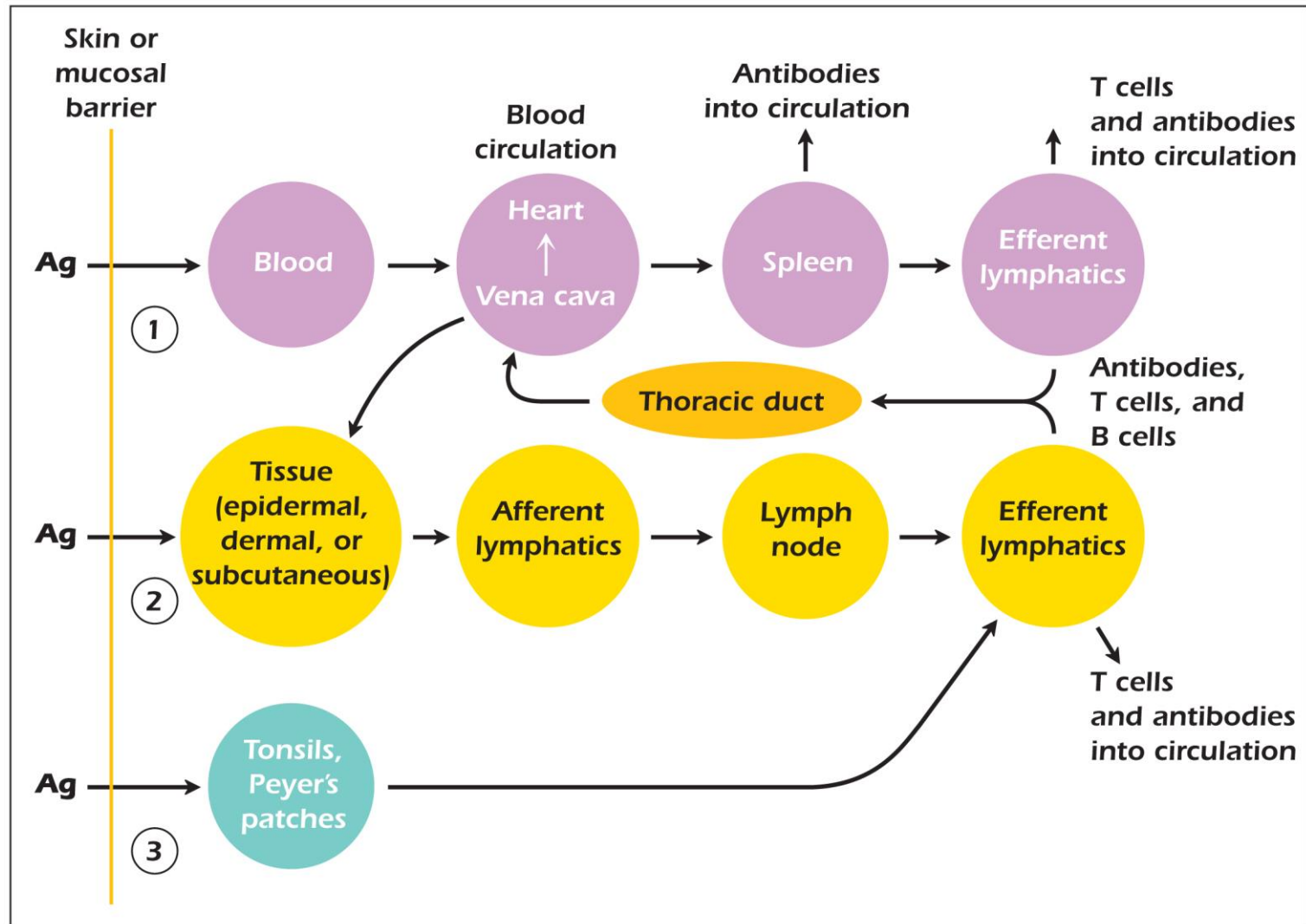




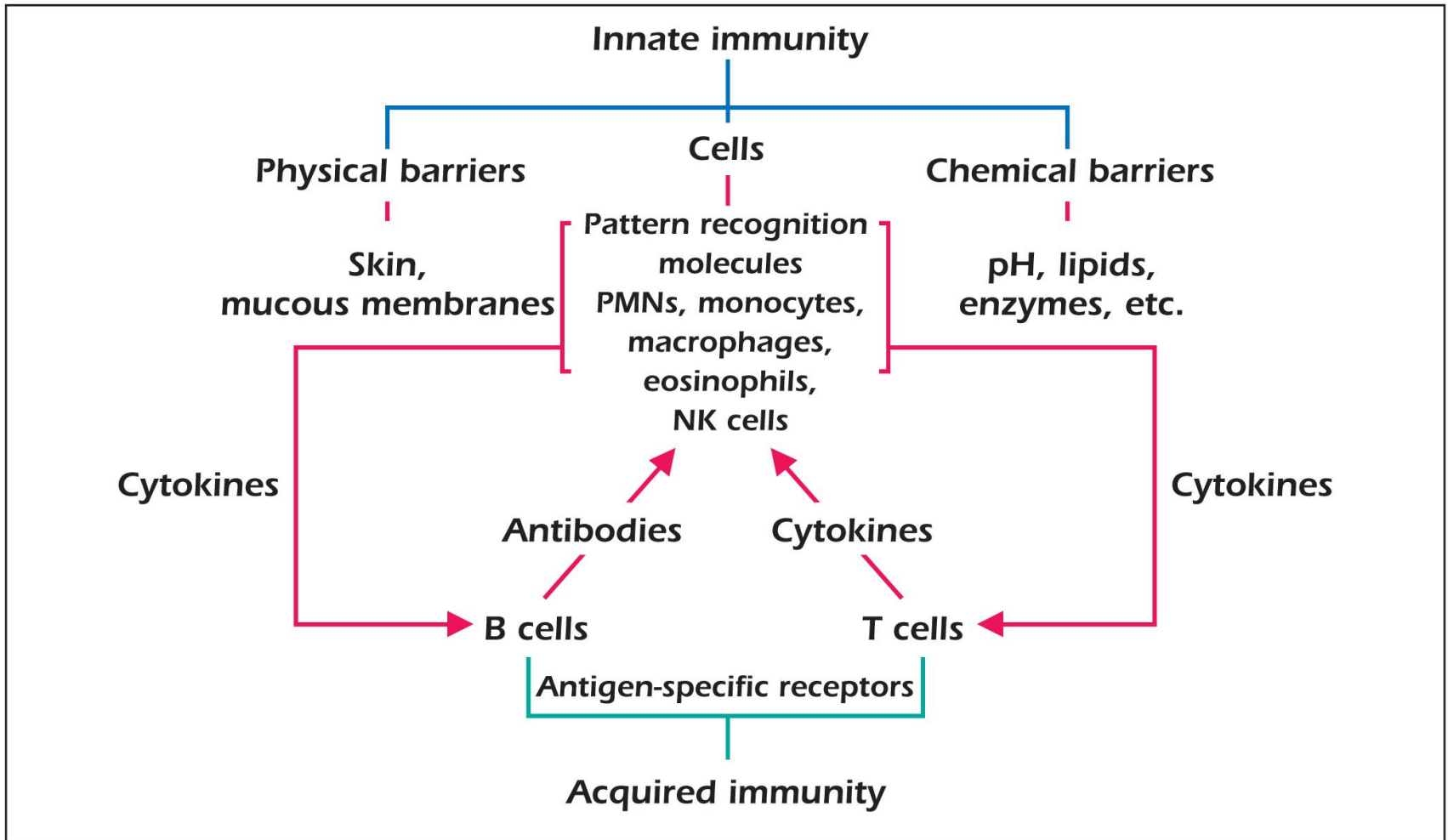
Overall and section views of the spleen.



(A) Section of a lymph node. Arrows represent the flow of lymph and lymphocytes. (B) Section through a lymph node showing T-cell zone, marginal zone, and germinal center.



Circulation of lymph and fate of antigen following penetration through (1) bloodstream, (2) skin, and (3) gastrointestinal or respiratory tract.



Interrelationship between innate and acquired immunity.